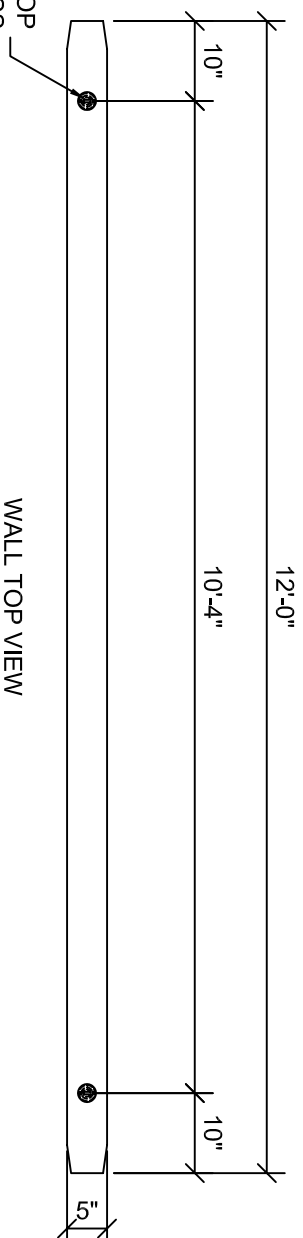


(2) 3/4"Øx6" B-16  
INSERTS W/ 1/2" RECESS



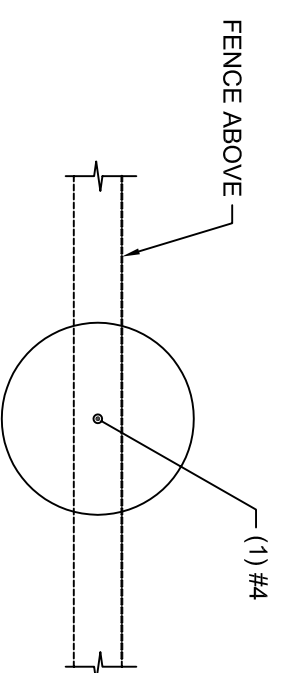
12'-0" MAX

10'-4"

10"

10"

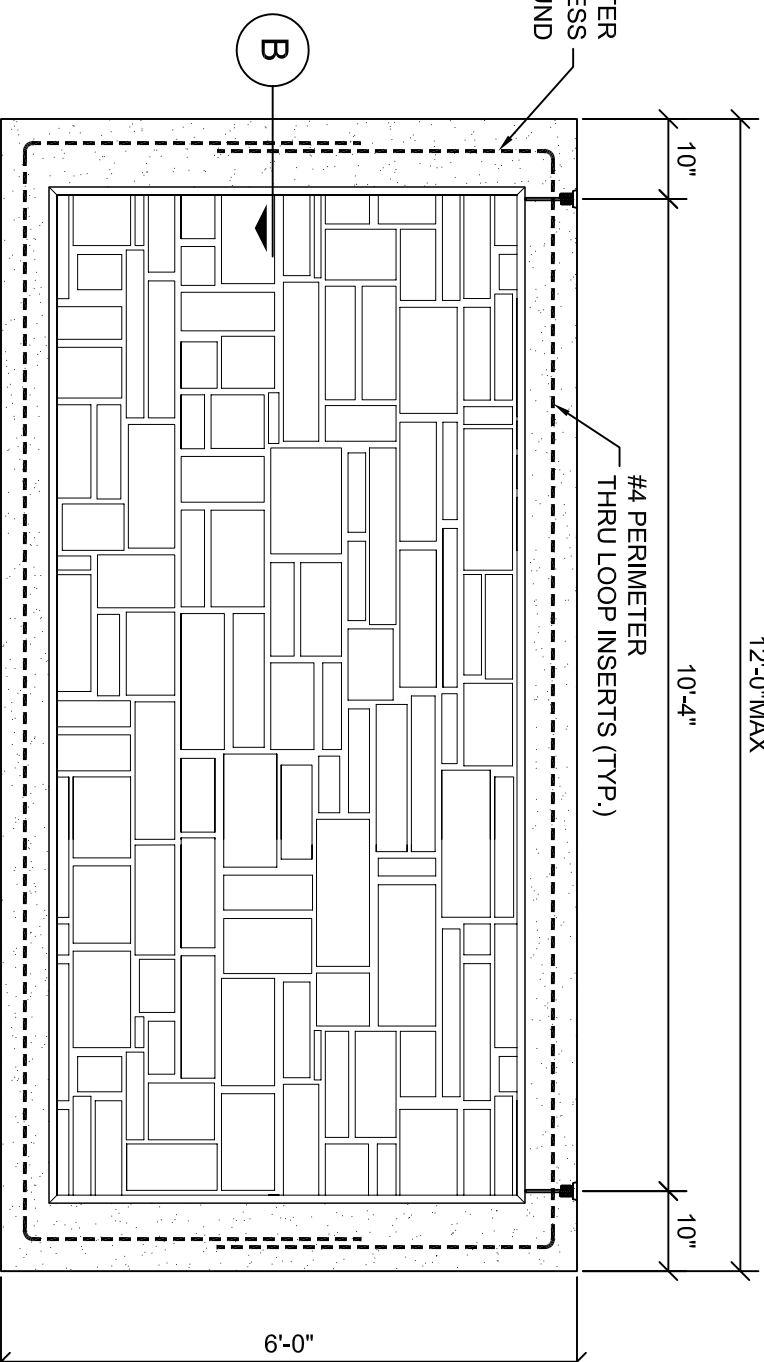
SECTION A



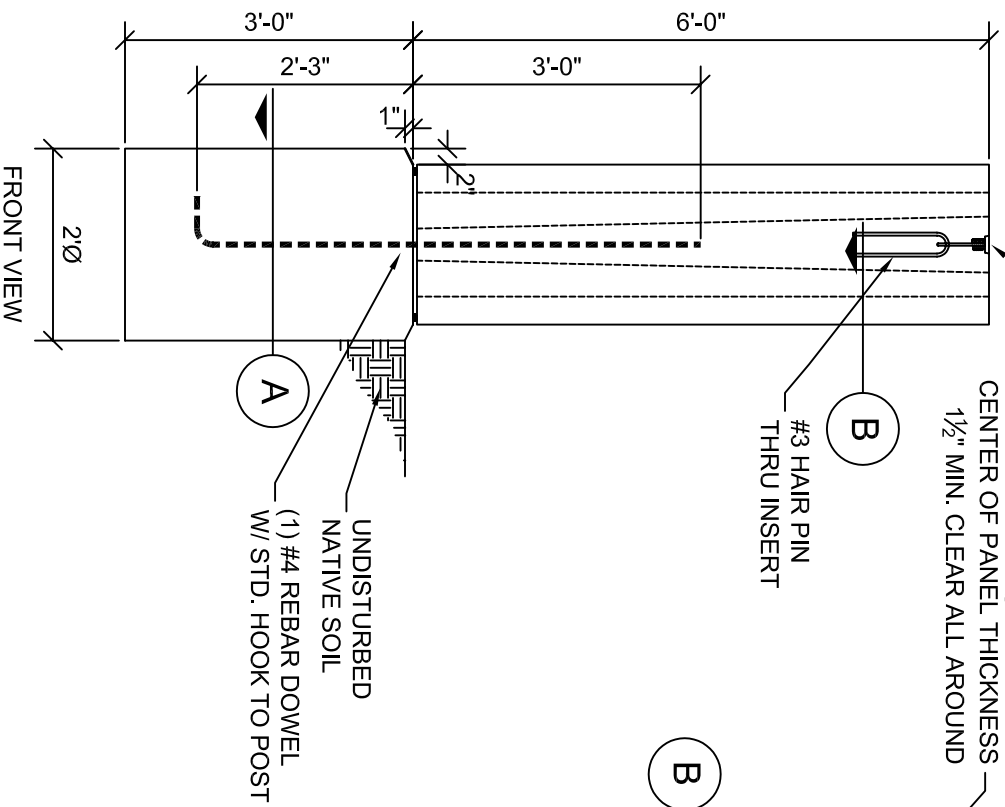
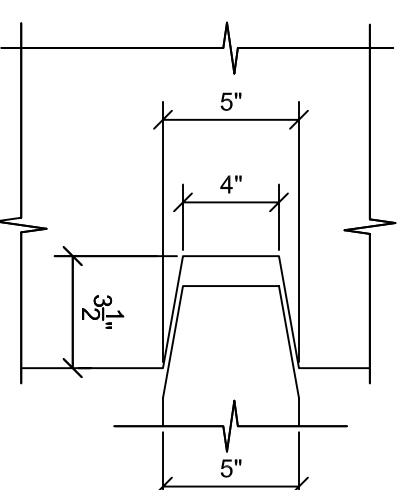
(2) 3/4"Øx6" B-16  
COIL LOOP INSERTS  
W/ 1/2" RECESS

#4 REBAR @ PERIMETER  
CENTER OF PANEL THICKNESS  
1 1/2" MIN. CLEAR ALL AROUND

#3 HAIR PIN  
THRU INSERT



SECTION B



WALL FRONT VIEW

**TYP. 6' PANEL, PIER & POST**

**CONCRETE**

$f_c = 5,000$ PSI	$f_{ci} = 3,500$ PSI
SLUMP: 4"	FPU: 75%
FINISH: PATTERN	MIX: 5600 SP
WEIGHT: 150 LBS. PCF.	AIR: 5%
VOLUME: - C.Y.	SHIPPING WT: - LBS.



16500 SOUTH 500 WEST  
BLUFFDALE, UTAH 84065  
PHONE: (801) 571-2028  
FAX: (801) 606-7786

SHEET TITLE: CHECKED BY:

SOUND WALL R.B.

DRAWN BY: SHEET #

J.A.

DATE:

9-13-06

**F-4.1**