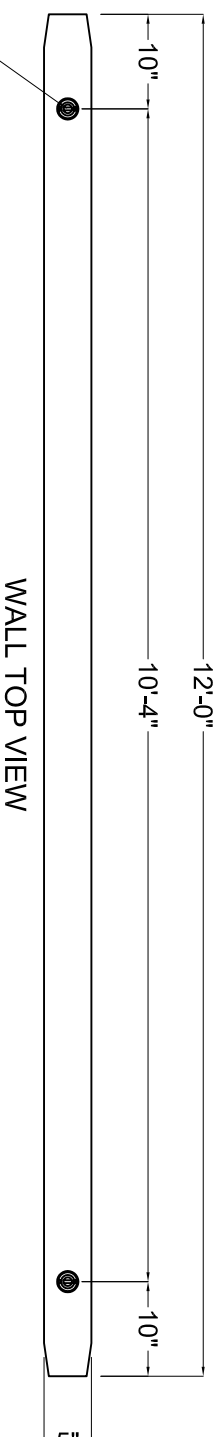
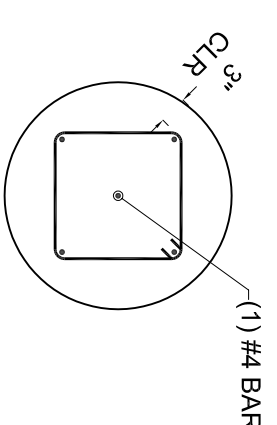


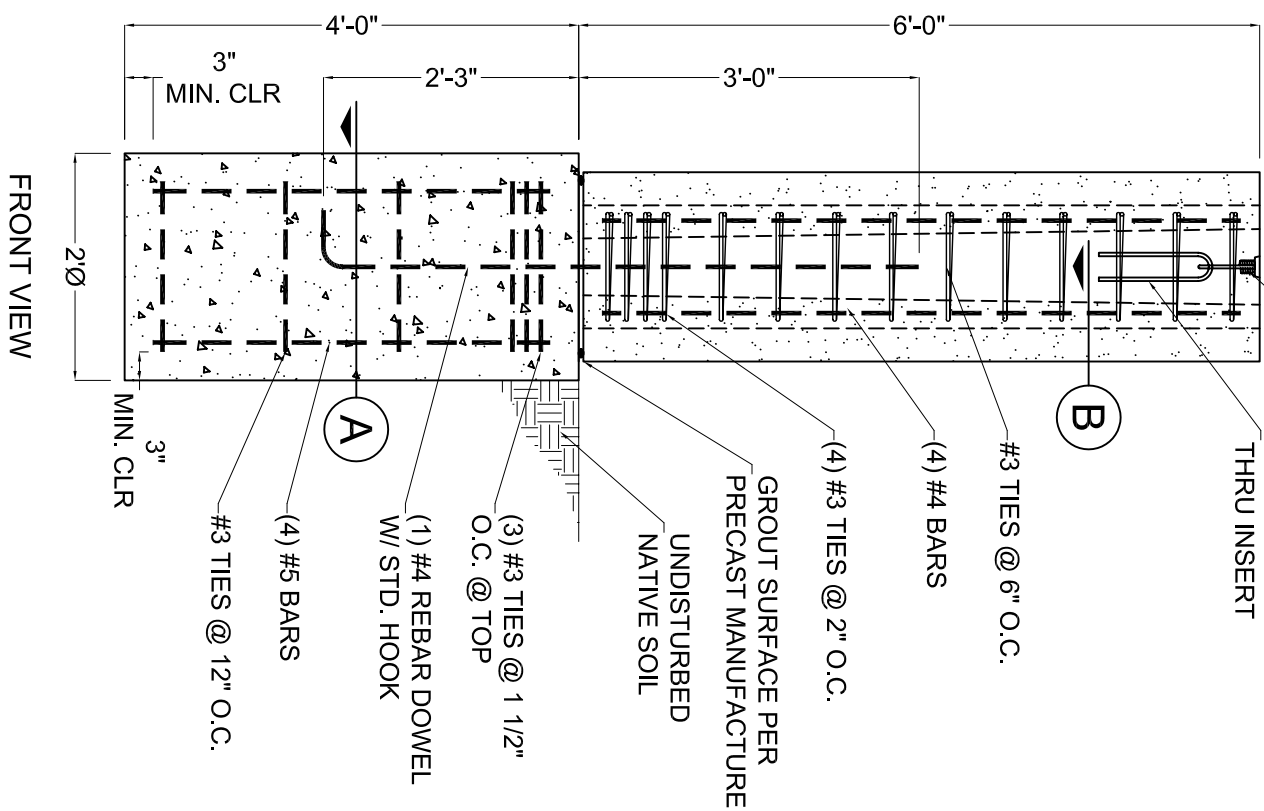
(2) 3/4"Øx6" B-16 COIL LOOP INSERTS W/ 1/2" RECESS



WALL TOP VIEW



SECTION A



FRONT VIEW

(2) 3/4"Øx6" B-16 COIL LOOP INSERTS W/ 1/2" RECESS

#3 HAIR PIN THRU INSERT

#3 TIES @ 6" O.C.

(4) #4 BARS

(4) #3 TIES @ 2" O.C.

GROUT SURFACE PER PRECAST MANUFACTURE UNDISTURBED NATIVE SOIL

(3) #3 TIES @ 1 1/2" O.C. @ TOP

(1) #4 REBAR DOWEL W/ STD. HOOK

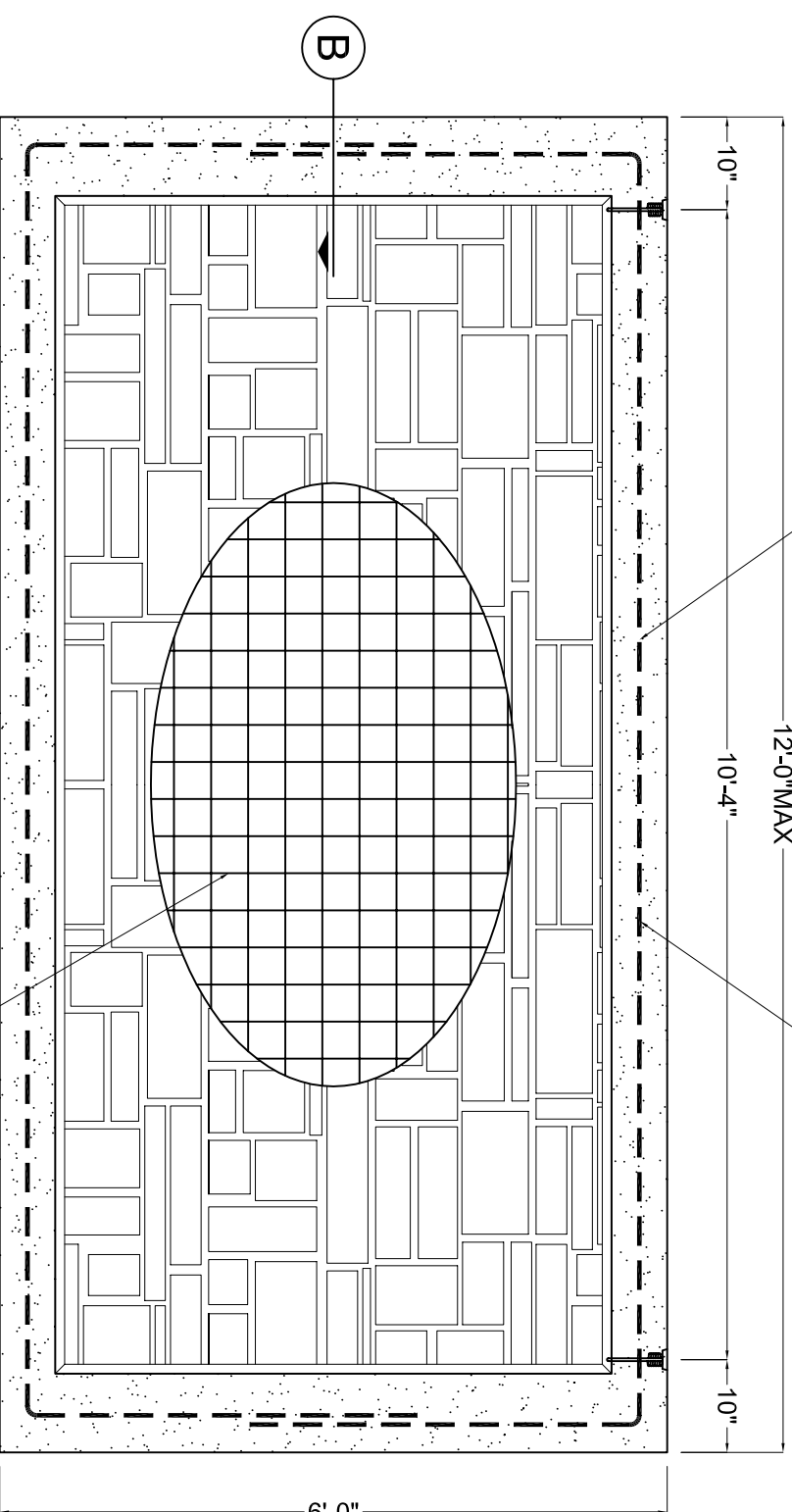
(4) #5 BARS

#3 TIES @ 12" O.C.

MIN. CLR

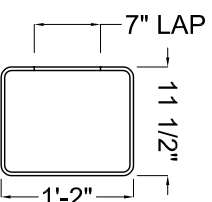
MIN. CLR

#4 REBAR @ PERIMETER CENTER OF PANEL THICKNESS 1/2" MIN. CLEAR ALL AROUND



WALL FRONT VIEW

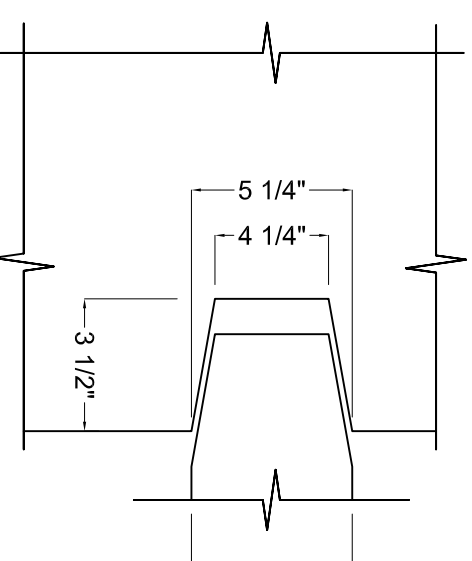
6x6-W4.0xW4.0 WWF CENTER IN WALL



3B-01

NOTES:

1. POST AND PANEL CONCRETE TO BE 5000 PSI.
2. FOOTING CONCRETE TO BE 3000 PSI.
3. MINIMUM SOIL LATERAL BEARING ALLOWABLE: 150 PSF/FT. OF DEPTH BELOW GRADE
4. MINIMUM ALLOWABLE SOIL BEARING PRESSURE: 2000 PSF.
5. DIMENSIONS MAY BE REDUCED TO FIT PROJECT REQUIREMENTS.
6. GROUT BETWEEN POST AND FOOTING TO BE 2500 PSI.



SECTION B

TYP. 6' REINF. PANEL, PIER & POST

CONCRETE	
$f_c = 4,000$ PSI	$f_{cl} = 2,500$ PSI
SLUMP: 4"-9"	FPU: N/A
FINISH: PATTERN	MIX: TBD
WEIGHT: 150 LBS. PCF.	AIR: 5%
VOLUME: TBD	SHIPPING WT: TBD



16500 SOUTH 500 WEST
BLUFFDALE, UTAH 84065
PHONE: (801) 571-2028
FAX: (801) 606-7786

SHEET TITLE: CHECKED BY:

ENGINEERED SOUND WALL M.S.

DRAWN BY: SHEET #

J.A.

DATE:

2-7-11

VC-5.1