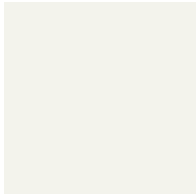




Color Chart

Colors



White



Limestone



Sunset



Harvest Gold



Nutmeg



Khaki Bronze



Beige



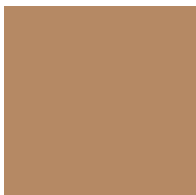
Washed Suede



Smokey Beige



Terra Cotta



Sepia



Chestnut



Western Cedar



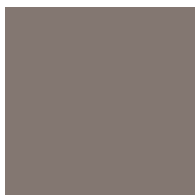
Cocoa Brown



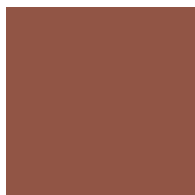
Dark Walnut



Plum



Taupe



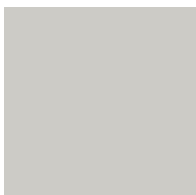
Brick Red



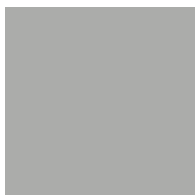
Island Spruce



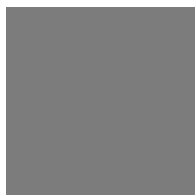
Blue Slate



Heather Grey



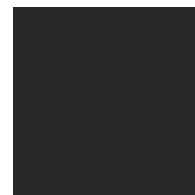
Stonewall



Deep Grey



Charcoal



Wrought Iron

Verti-Crete Colors



VC*-Stain is a water-based acrylic coating designed for superior penetration into concrete. It ensures moisture proofing, color stability, and ultraviolet resistance. When properly applied it will not discolor, peel, crack, or blister. Multiple coatings are compatible for color combinations on concrete and masonry and correction of natural color imperfections. VC-stains will impart a uniform color on all forms of concrete: precast, poured, glass-fiber-reinforced, brick, stucco, and stone surfaces. Its water-based composition makes it a user-friendly product, which is solvent-free, odor-free, and safe on interior surfaces. VC-stains comply with all VOC regulations.

APPLICATION: *As a pre-requisite for all coatings, a clean surface is a must.*

- 1- Surfaces must be free of dust, oil, and external soils, which can affect adhesion and color. DO NOT use with form oils containing SILICON. For best results, any previous coating must be removed. Sealers/curing compounds containing silicons or resins must be removed or they will affect the quality of finish. Extremely smooth surfaces should be sandblasted. Some previous coatings can be compatible, however, a test-spot is definitely recommended.
- 2- VC-stains are water-dilutable, in all proportions. For best dilution (Base Coat vs. Highlighter) see your rep. All methods of application can be used: spray, roll, brush or rag touch up. Size, quantity and quality of your parts will determine your choice of equipment. For your custom plan talk to your rep. All paint equipment can be cleaned with warm-soapy water.



COVERAGE: The following variables will affect your square foot per gallon coverage: Your choice of application equipment, your design plan, number of base-coats, highlighters, etc. Consult your rep.

VARIATIONS IN COLOR tone/shade/hue are to be expected between "actual concrete colors" and the color chart. These differences are mostly due to:

- A. Chemical reaction between various concrete mixes and stains.
- B. Reaction to sun's ultraviolet energy, and local environmental conditions such as: humidity, salt, temperature, air quality, etc.
- C. Printing inks on paper versus the actual product on your concrete surface.

WARRANTY & CAUTION: With environmental considerations, the sealing/moisture protection and quality of this product is guaranteed for 10 years. However, the same environmental conditions (see paragraph "B" above) will affect the longevity of color within 2-4 years.



Mail
P.O. Box 2347 / Sandy, Utah 84091

Plant
16500 South Pony Express Road / Bluffdale, Utah 84065

Phone 801 571-2028
Fax 801 571-3486
E-mail sales@verti-crete.com
Web www.verti-crete.com



* VC=Verti-Crete